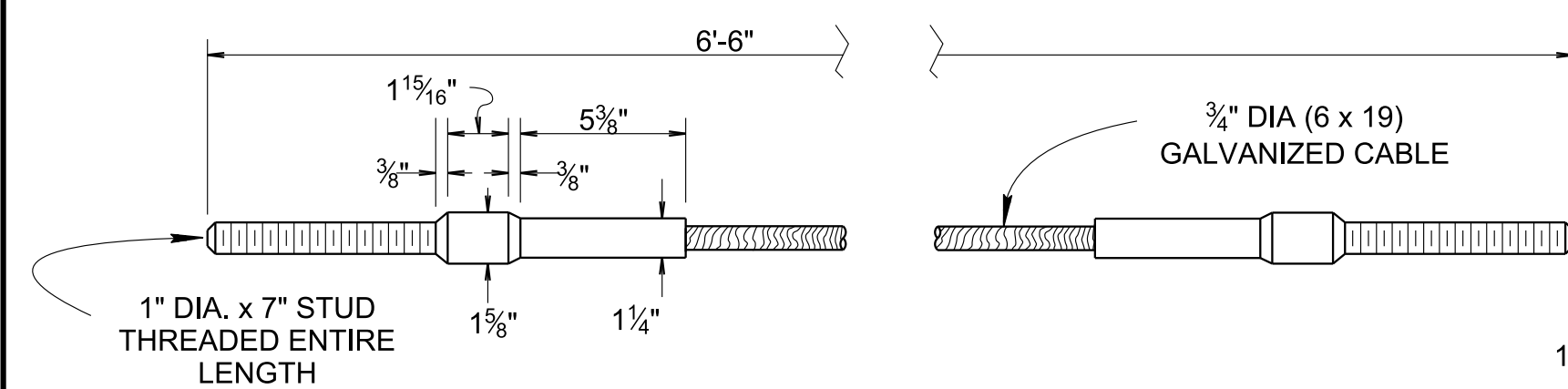


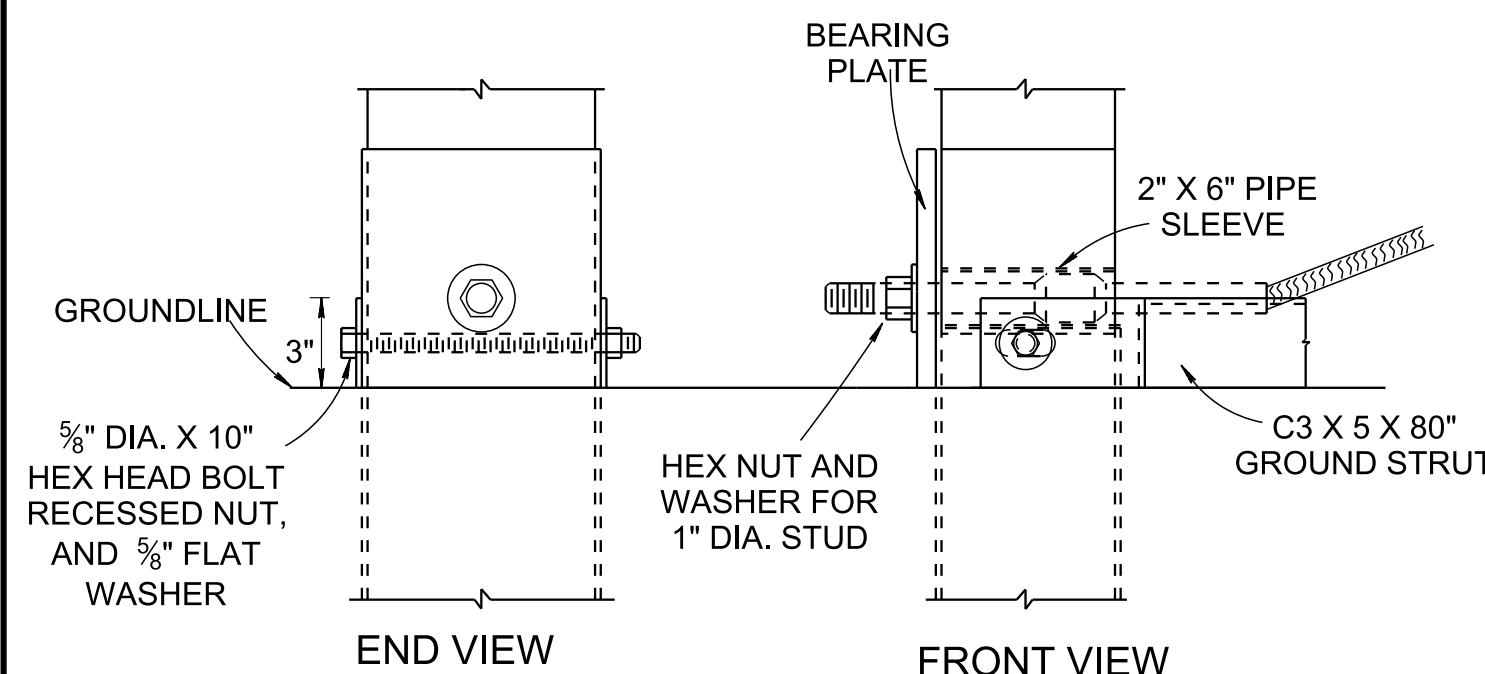
DOWNSTREAM ANCHOR TERMINAL

ONLY FOR DOWNSTREAM USE, WHEN LOCATED OUTSIDE THE HORIZONTAL CLEARANCE AREA OF OPPOSING TRAFFIC

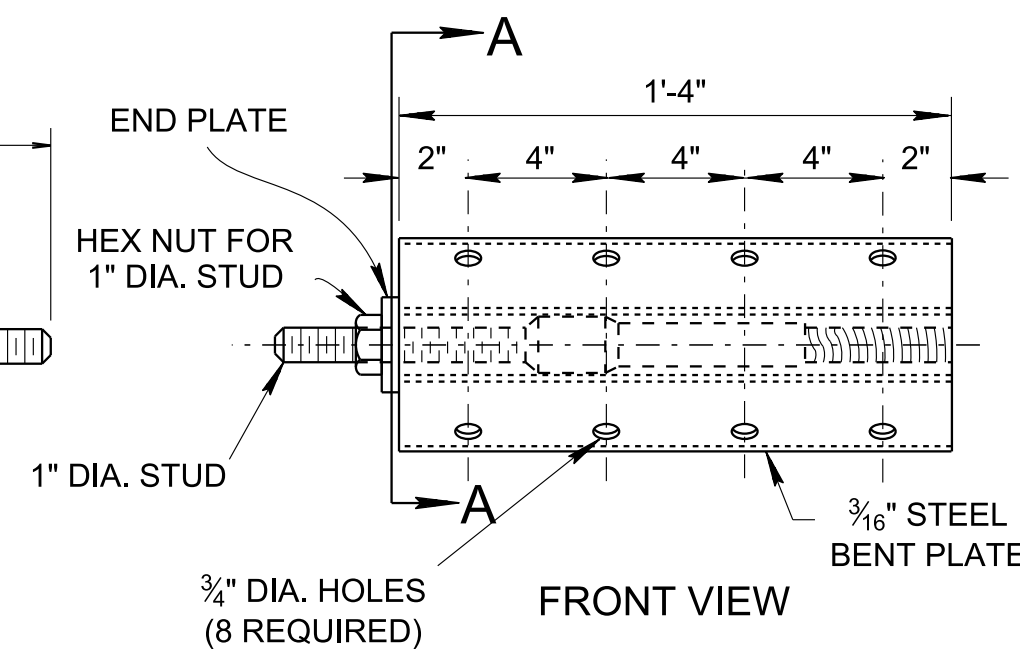


STANDARD SWAGE FITTING AND STUD

NOTE: CABLE TO BE SWAGE-CONNECTED

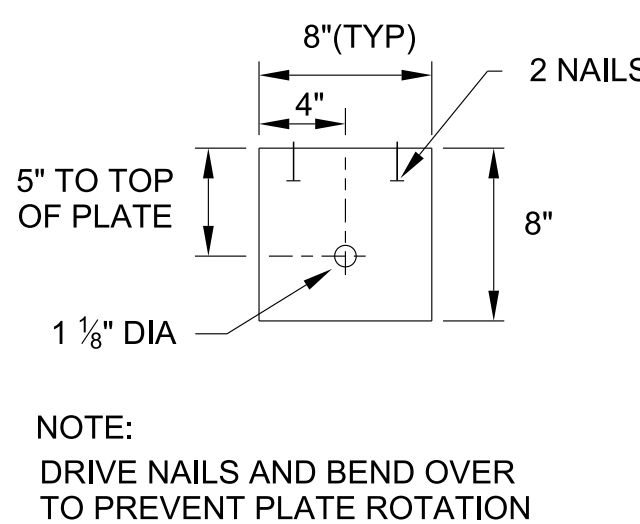


BEARING PLATE ASSEMBLY DETAIL

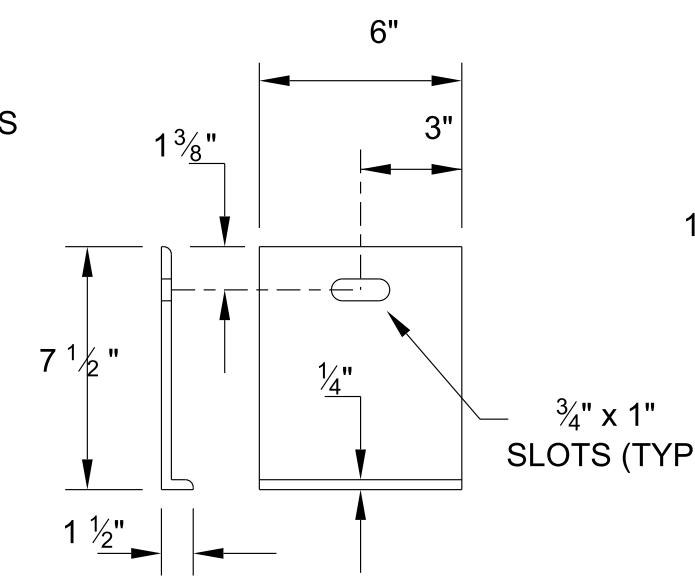


ANCHOR PLATE ASSEMBLY DETAILS

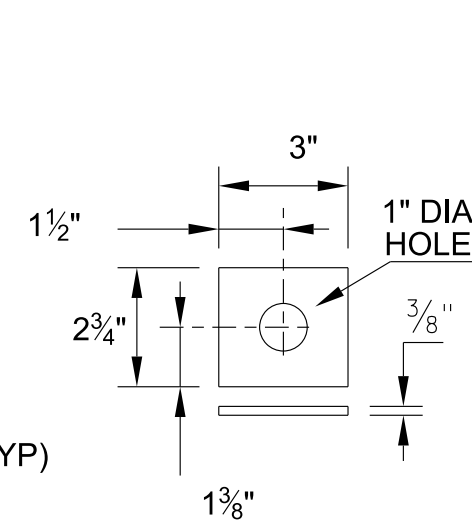
(ANCHOR PLATE, (8) 5/8" X 1 1/2" HEX HEAD BOLTS, NUTS, AND WASHERS)



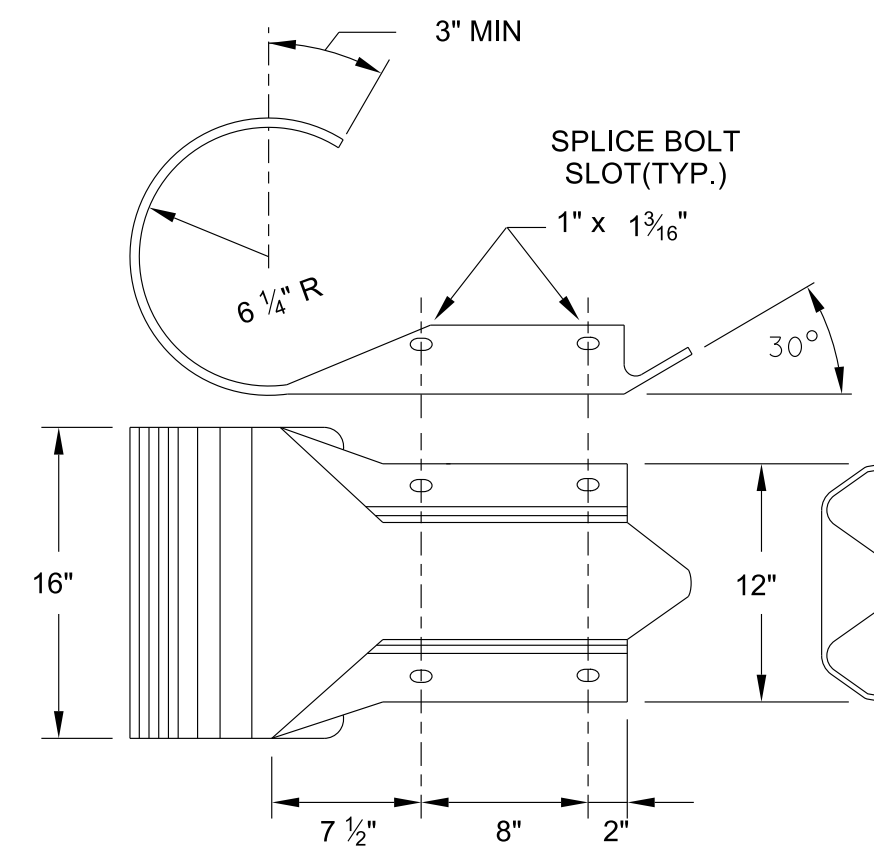
BEARING PLATE
8"x 8"x 5/8" PL



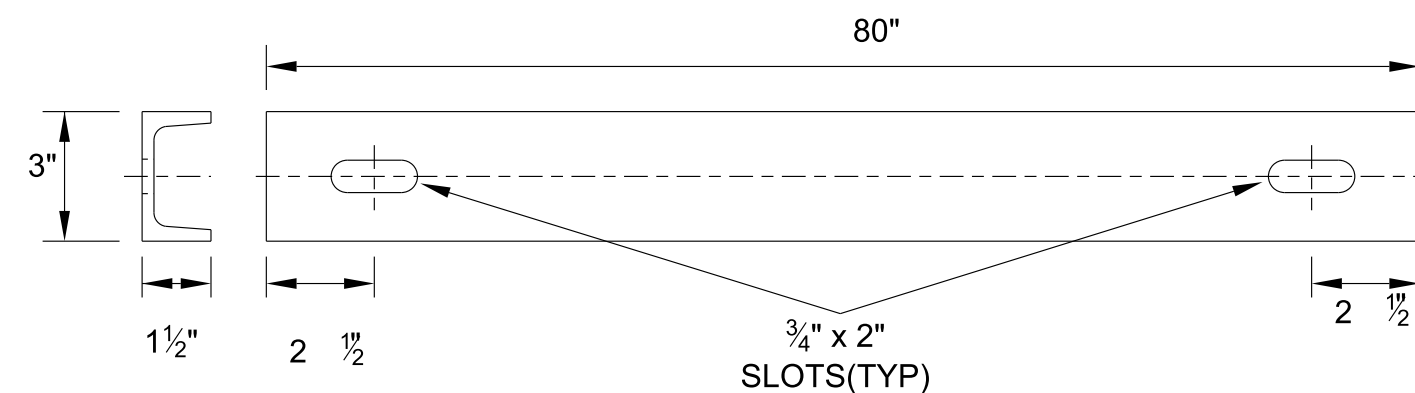
SHELF ANGLE BRACKET



END PLATE

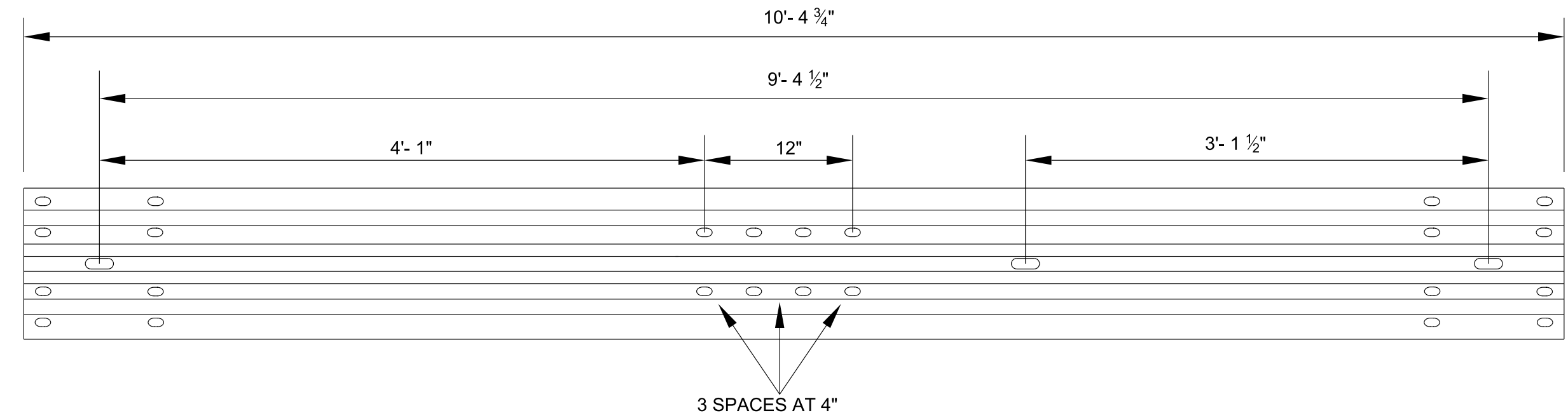


W-BEAM END SECTION (ROUNDED) (12 GA.)

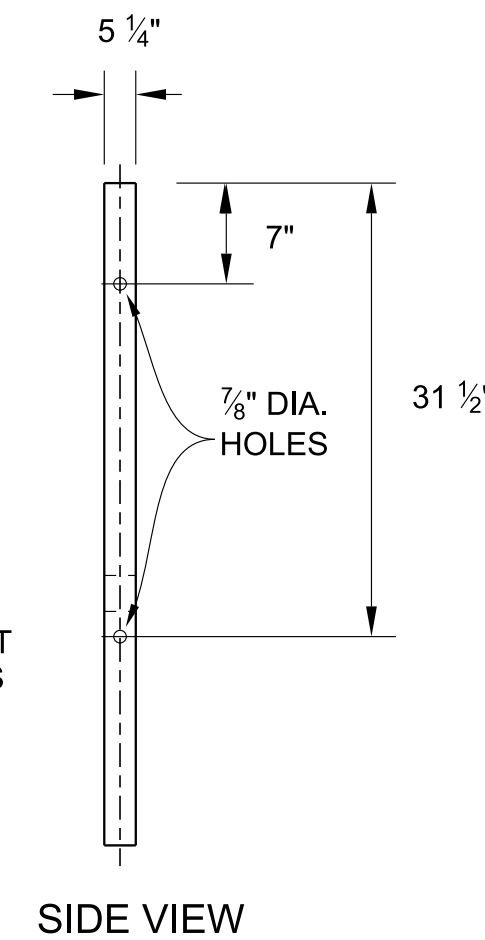


GROUND STRUT

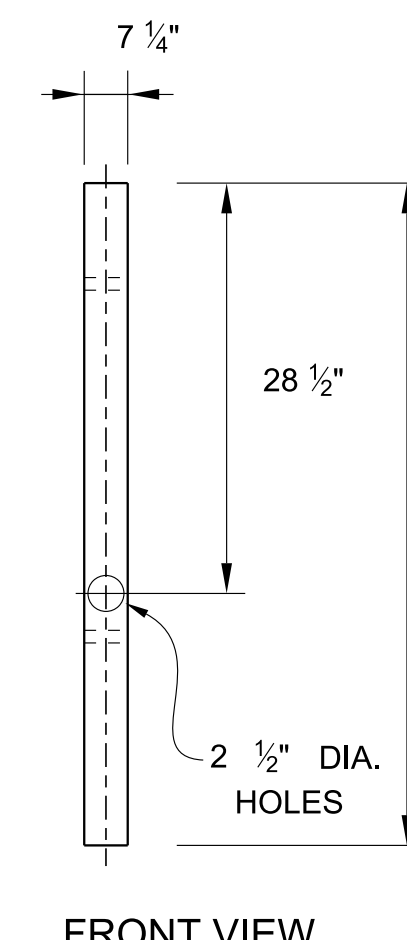
C3 x 5 x 80", GRADE A36



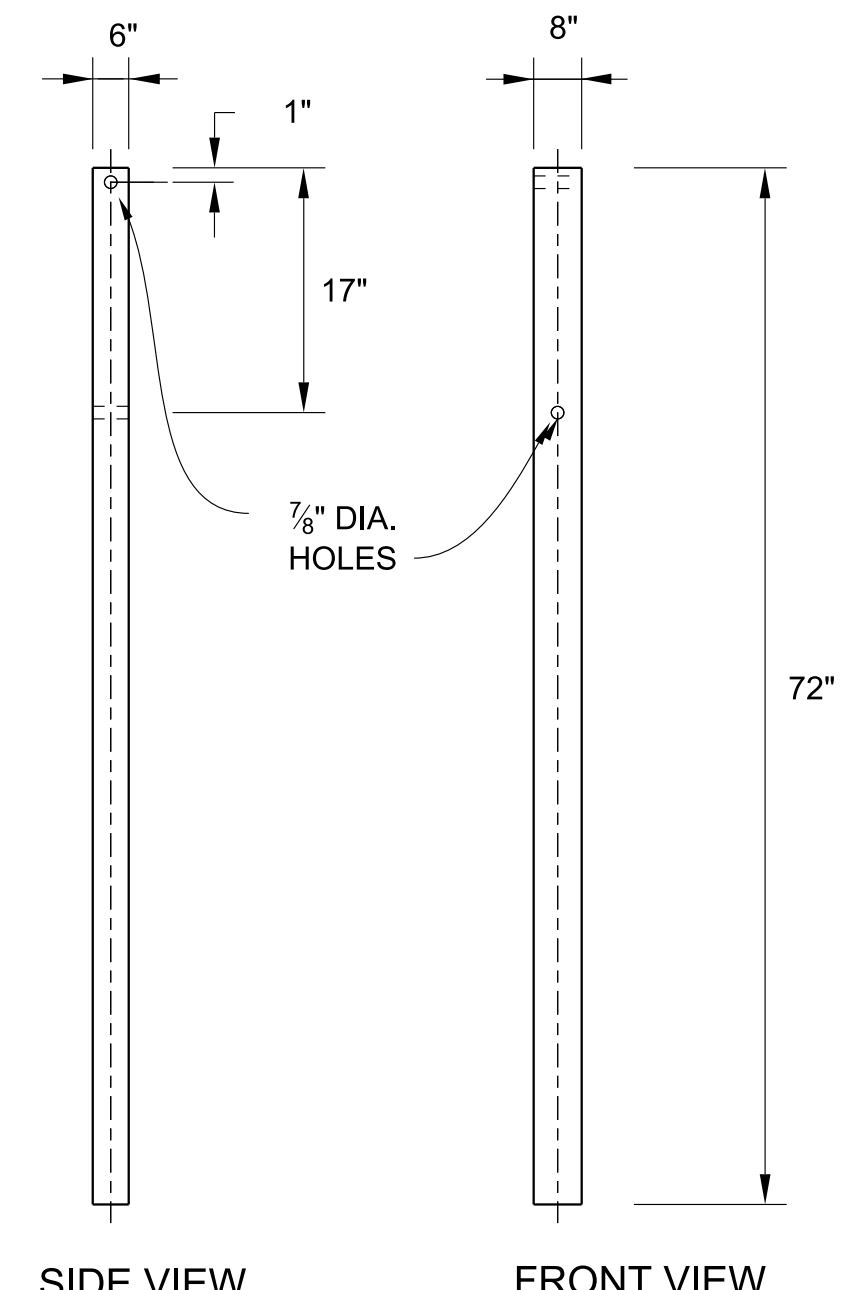
TERMINAL RAIL ELEMENT



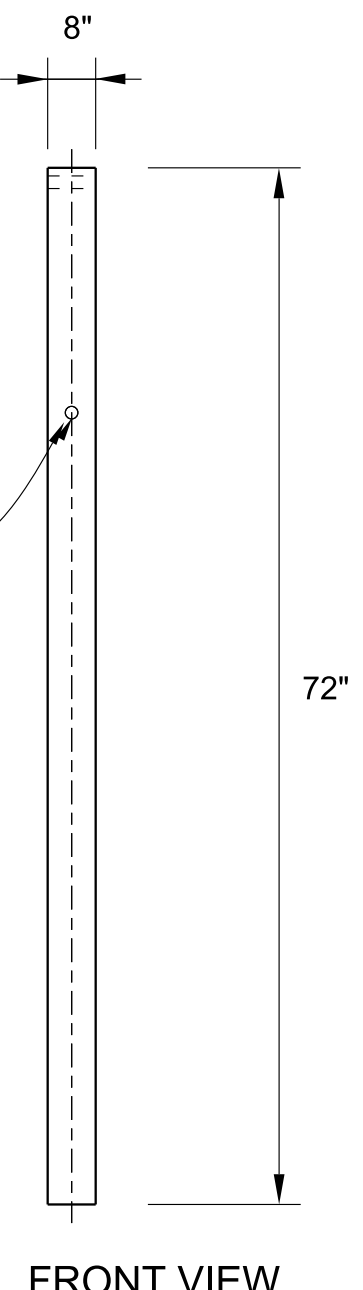
SIDE VIEW



FRONT VIEW



SIDE VIEW



FRONT VIEW

TERMINAL POST

7 1/4" x 5 1/4" x 46" WOOD POST

STEEL FOUNDATION TUBE

6" x 8" x 1/8" x 72" STEEL TUBE

GENERAL NOTES

- TYPE 13 GUARDRAIL TERMINAL SHALL ONLY BE INSTALLED AT TRAILING ENDS(DOWNSTREAM) WHEN LOCATED OUTSIDE THE HORIZONTAL CLEARANCE AREA OF OPPOSING TRAFFIC. SEE S-CZ-1.
- ALL HOLES IN WOOD POSTS ARE TO BE DRILLED BEFORE PRESERVATIVE TREATMENT IS APPLIED.
- ALL CUTTING, DRILLING, AND WELDING OF STEEL COMPONENTS SHALL BE DONE BEFORE GALVANIZING.
- THE FINISHED CABLE ASSEMBLY WILL NOT BE ACCEPTABLE UNLESS IT IS IN TENSION WITH NO SAG.
- OTHER ANCHOR CABLE ASSEMBLIES PROVIDING A MINIMUM BREAKING STRENGTH OF 40,000 POUNDS PER SQUARE INCH WILL BE ACCEPTABLE.
- TO BE PAID UNDER ITEM
705-06.10 GR TERMINAL TRAILING END (TYPE 13) MASH TL3 PER EACH. (SEE S-PL-2)
- ALL HARDWARE SHALL CONFORM TO ASTM A307 UNLESS OTHERWISE SHOWN.
- DESIGN BASED ON AASHTO MASH TL-3, TTI REPORT 9-1002-6.

MINOR REVISION -- FHWA
APPROVAL NOT REQUIRED.

STATE OF TENNESSEE
DEPARTMENT OF
TRANSPORTATION

TYPE 13
GUARDRAIL ANCHOR